



# INDOFINE Chemical Company, Inc.

121 Stryker Lane, Bldg. 30, Suite 1 • Hillsborough, NJ 08844 • U.S.A.

Phone: (908) 359-6778 • FAX: (908) 359-1179

website: [www.indofinechemical.com](http://www.indofinechemical.com)

e-mail: [chemical@indofinechemical.com](mailto:chemical@indofinechemical.com)

## CERTIFICATE OF ANALYSIS

Catalog Number: 22-419

Product Name: 4-METHYL-2,6-DIMETHOXYPHENOL

CAS Number: [6638-05-7]

Lot Number: 2109594

Chemical Formula: C<sub>9</sub>H<sub>12</sub>O<sub>3</sub>

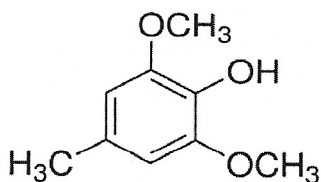
Molecular Weight: 168.19

Melting Point: 39-41.1°C

Appearance: Colorless to pale brown solid

Storage: Store in a cool, dry place

Purity(GC): 98.23%



Prepared by:  
*Ramesh Mandadi*  
Ramesh Mandadi  
Director of Operations

Reviewed and Approved by:  
*Sujata Moton*  
Sujata Moton  
VP



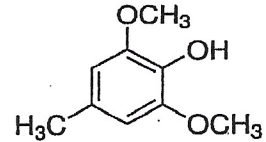
# INDOFINE Chemical Company, Inc.

121 Stryker Lane, Building 30  
Hillsborough, NJ 08844 USA  
Phone: (908) 359-6778; Fax: (908) 359-1179

## GC ANALYSIS

**22-419**    **4-METHYL-2,6-DIMETHOXYPHENOL**    Lot No.: 2109594

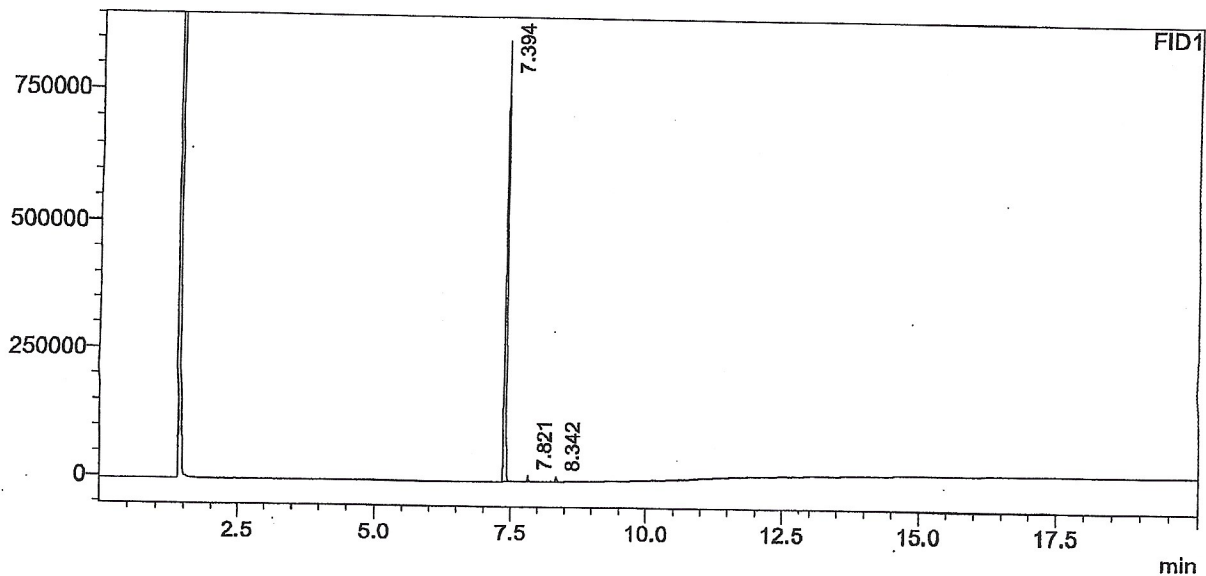
Sample Name : 2,6-Dimethoxy-4-methyl phenol  
Sample ID :  
Data Filename : 13082021115.gcd  
Method Filename : General Method.gcm  
Vial # : 7  
Injection Volume : 1.0 uL



Column: ZB-5MS (30 Mts x0.25mm x0.25um)  
Diluent: Methanol

### <Chromatogram>

uV



### <Peak Table>

FID1

Peak#	Ret. Time	Area	Height	Area%	Name
1	7.394	1621519	848299	98.235	
2	7.821	16232	10303	0.983	
3	8.342	12903	7925	0.782	
Total		1650653	866527	100.000	